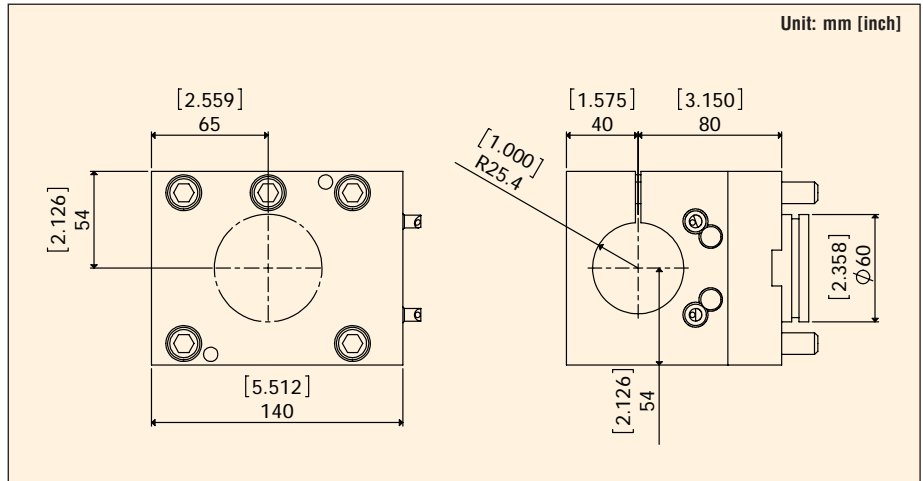




## 2" Boring Bar Holder with Slot

Part #: MNL12-BGS20Z

Mori Seiki Part #: T10142



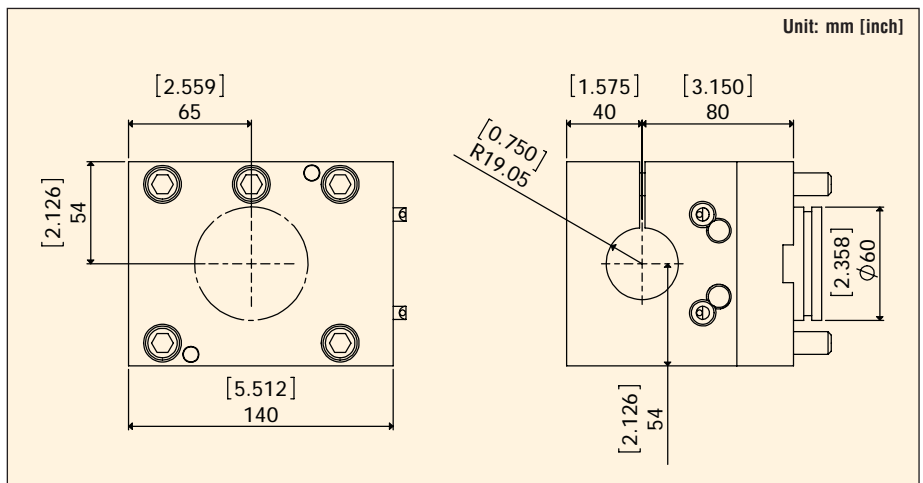
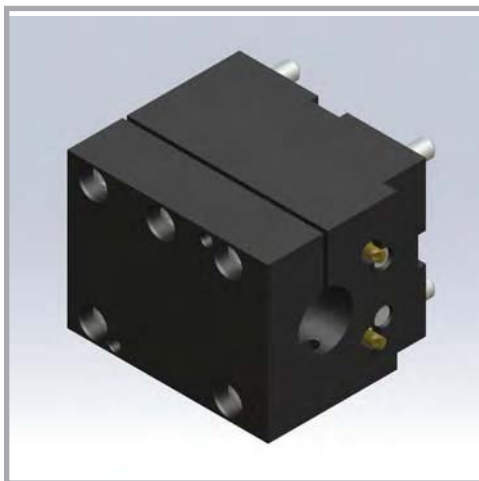
Description	Output Size	Shaft Diameter
2" Boring Bar Holder with Slot	2" (50.8mm)	2.36" (60mm)

Tool suitable for Mori Seiki 12-station NL Series only.

## 1.5" Boring Bar Holder with Slot

Part #: MNL12-BGS15Z

Mori Seiki Part #: T10143



Description	Output Size	Shaft Diameter
1.5" Boring Bar Holder with Slot	1.5" (38.1mm)	2.36" (60mm)

Tool suitable for Mori Seiki 12-station NL Series only.